



Partners Conduct Q&A with Immigration Co-Chair on Expected Increase of Workplace Enforcement

News

1.29.25

Partners **Courtney Leyes** and **Emily Litzinger** co-authored the nineteenth installment of their *QSR Magazine* column addressing employment law questions specific to the restaurant industry. In this edition, the hospitality gurus conducted a Q&A with the firm's Immigration Practice Group Co-chair, **Jocelyn Campanaro**, to provide valuable insight on what QSRs should expect in terms of increased workplace enforcement efforts under the second Trump Administration.

To read the article visit [QSR Magazine](#).

Please reach out to our [Media team](#) for any news inquiries.

Related People

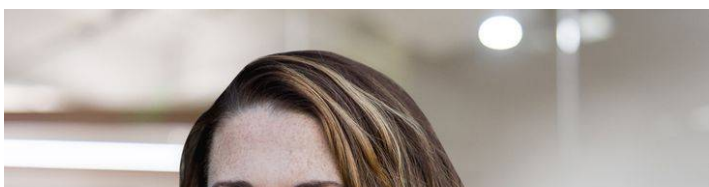


Courtney Leyes

Partner

615.488.2902

[Email](#)





Emily N. Litzinger

Partner
502.561.3978
Email



Jocelyn Campanaro

Partner
303.218.3667
Email

Service Focus

Immigration

Industry Focus

Hospitality

Related Offices

Gulfport
Memphis
Nashville
Louisville