



Focus on PA: Recent Employment Trends and Updates

EMPLOYMENT & LABOR CLE INSTITUTE LEHIGH VALLEY (ACC GREATER PHILADELPHIA)

Event

7.23.24

Fisher Phillips attorneys, Heather Steele and Gabrielle Giombetti, were featured speakers during this event.

Related People



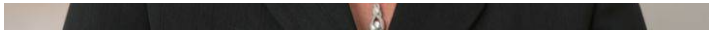
Gabrielle Giombetti

Partner

610.230.2186

Email





Heather Zalar Steele

Partner

610.230.2134

Email