



Employer's Cheat Sheet for Election Season

Insights

10.15.24

Here's a handy cheat sheet that summarizes some key points from our [Essential FAQs for the 2024 Election Season](#). Make sure to check out the full series of FAQs to understand your rights and responsibilities.



Employer's Cheat Sheet for Election Season

Here's a handy cheat sheet that summarizes some key points from our [Essential FAQs for the 2024 Election Season](#). Make sure to check out the [full series of FAQs](#) to understand your rights and responsibilities.

GENERALLY ACCEPTABLE

The following actions are generally acceptable as long as they are enforced consistently and follow NLRA guidelines ([read more here](#)).

- Encouraging civic engagement to get out and vote
- Barring political signs or shirts or other displays in the workplace
- Prohibiting employees from campaigning or distributing political literature in the workplace during work hours
- Setting reasonable expectations on professionalism and appropriate workplace interactions
- Using company resources to support a candidate or position
- Enforcing a politically neutral work environment

CHECK WITH COUNSEL

Check with your FP attorney before you take any of the following actions to understand any specific restrictions that might apply.

- Restricting employees' speech at work (NLRA concerns)
- Holding mandatory meetings to talk about politics (some states have "captive audience" laws)
- Disciplining an employee for their political opinions (could violate antidiscrimination laws)
- Disciplining an employee for controversial opinions made online or outside the workplace (some states have laws protecting off-duty conduct)
- Prohibiting employees from taking time off to vote ([check out the detailed list summarizing the laws in each state](#))
- Offering incentives for civic participation (could violate state law on influencing voting)

DON'T DO

These actions could cause you potential legal risk.

- Coercing employees to vote in a particular manner
- Pressuring employees to attend political events
- Commenting on employees' political views or activities

Check out the full [FP Election Season Resource Center for Employers](#) to review all of our offerings and practical resources.



fisherphillips.com

Check out the full [FP Election Season Resource Center for Employers](#) to review all of our offerings and practical resources. If you have questions, contact your Fisher Phillips attorney, the authors of this Insight, or [any attorney in our Government Relations Practice Group](#). Make sure to sign up for [Fisher Phillips Insights](#) to stay up to speed on the latest developments.

Related People



Leanne Lane Coyle

Associate

610.230.6121

[Email](#)

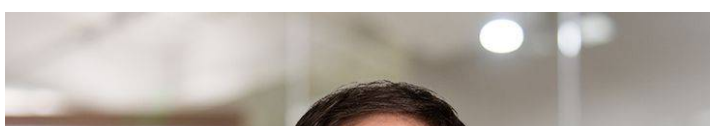


Rick Grimaldi

Partner

610.230.2136

[Email](#)





Joshua D. Nadreau
Regional Managing Partner and Vice Chair, Labor Relations Group
617.722.0044
Email

Service Focus

Counseling and Advice

Labor Relations

Wage and Hour

Employee Leaves and Accommodations

Government Relations

Trending

Election Season Resource Center for Employers

Employer's Cheat Sheet for Election Season