



2024 Midwest Labor and Employment Seminar

Event

Overland Park Convention Center

6000 College Blvd

Overland Park, KS 66211

10.11.24

9:00 AM — 3:30 PM CDT

Cost: \$75 per person

**Fisher Phillips will donate 100% of the registration fees to a local children's charity. The charity will be selected by those in attendance for the seminar.*

Register for Event

Please join us for our annual labor and employment law seminar designed to provide timely information on hot topics in HR and employment law. We will provide practical solutions to some of the most important issues employers are facing in today's ever-changing workplace environment.

Seminar sessions will include:

- **Legal Updates, The Latest News from Courts, Regulators and Congress** – This session will address key federal, Missouri and Kansas court decisions from the past year that affect employers, with lessons learned and best practices going forward. We will have a discussion about these breaking topics ranging from the Pregnant Workers Fairness Act to the National Labor Relations Act to wage and hour issues and more.
- **AI in the Workplace** – This session will discuss the benefits and risks of AI in the workplace and how it is likely to be most beneficial in the HR context.
- **Accommodating Mental Health Conditions** – This session will provide practical information on recognizing the need for accommodations and the role of the interactive process in navigating these tricky issues.
- **Politics in the Workplace** – This session will explore some of the issues employers may face with respect to what is expected to be unprecedented workplace tension during this election season, including a 10-Step Action Plan to assist employers in navigating these difficult issues.

If you have questions, please contact **Ashley Allison**

Educational Credits

HRCI and SHRM

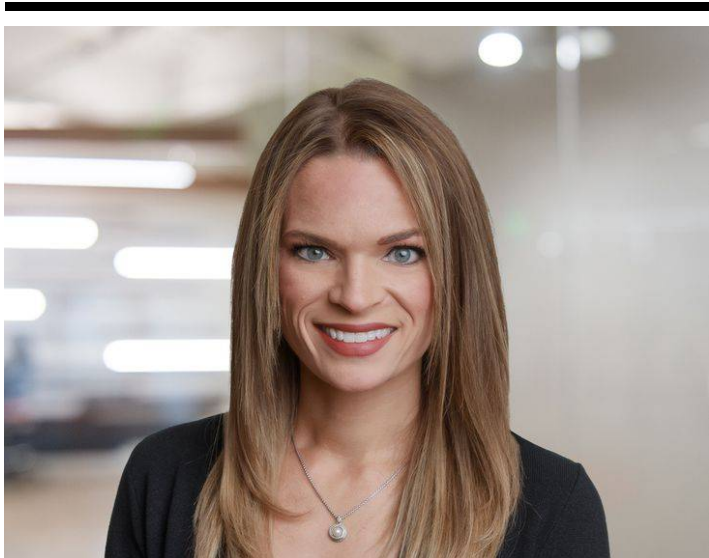
- The firm is submitting this webinar for credit.

CLE

- Fisher Phillips will seek MCLE approval in Kansas and Missouri as allowed by those jurisdictions. In certain instances, some programs may not be awarded CLE credit because of content, delivery or jurisdictional restrictions.
-

Fisher Phillips is committed to providing access to all of our events for disabled attendees. If you need an accommodation to participate in this event, please give us three business days advance notice prior to the scheduled event by contacting [Ashley Ollison](#). Thank you.

Related People



Laura Bailey Brown

Partner

816.460.0208

Email



James R. Holland, II
Regional Managing Partner
816.842.8770
[Email](#)



Samantha J. Monsees
Partner
816.842.8770
[Email](#)



Melody L. Rayl
Partner
816.460.0201
Email



Lauren M. Sobaski
Partner
816.460.1237
Email

Service Focus

- AI, Data, and Analytics
- Employee Leaves and Accommodations
- Employment Discrimination and Harassment
- Labor Relations
- Wage and Hour
- Workers' Compensation and Unemployment Cost Management
- Workplace Safety and Catastrophe Management

Trending

Election Season Resource Center for Employers

Related Offices

Kansas City