



Louisville Partner Discusses Ways to Prevent Workplace Bullying

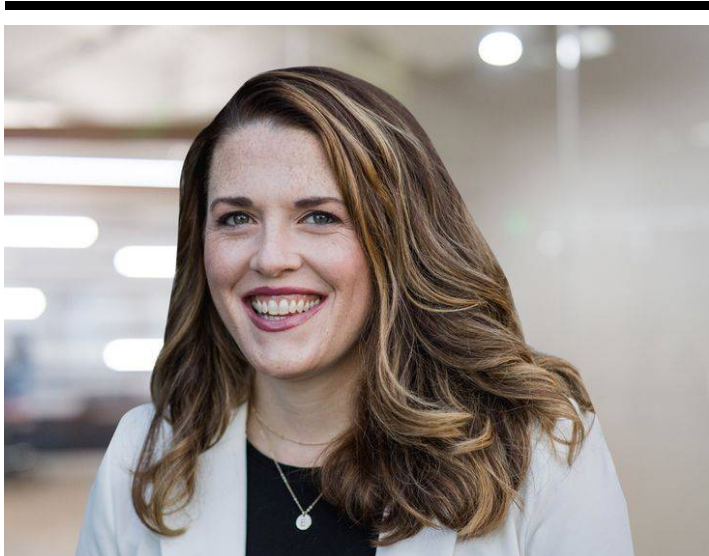
News
6.24.24

In an interview with *SHRM*, **Emily Litzinger** shares her insight on how employers can foster a safe work environment and prevent workplace bullying.

To read the article visit [SHRM](#) (subscription required).

Please reach out to our [Media team](#) for any news inquiries.

Related People



Emily N. Litzinger
Partner
502.561.3978
Email

Related Offices

Louisville